



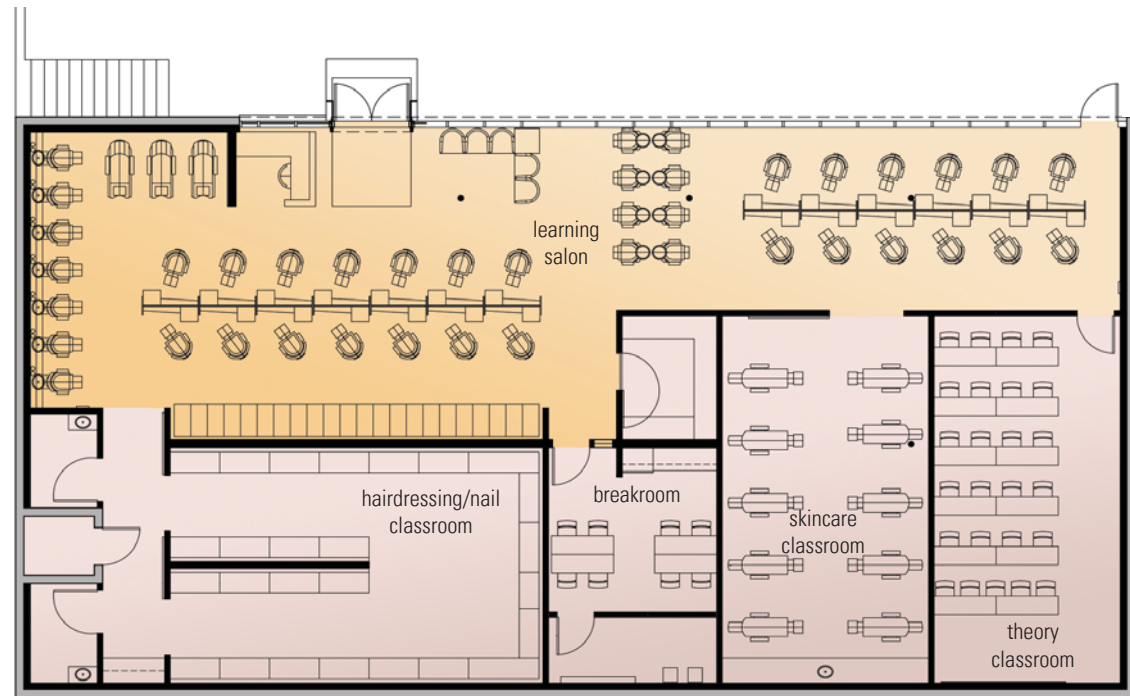
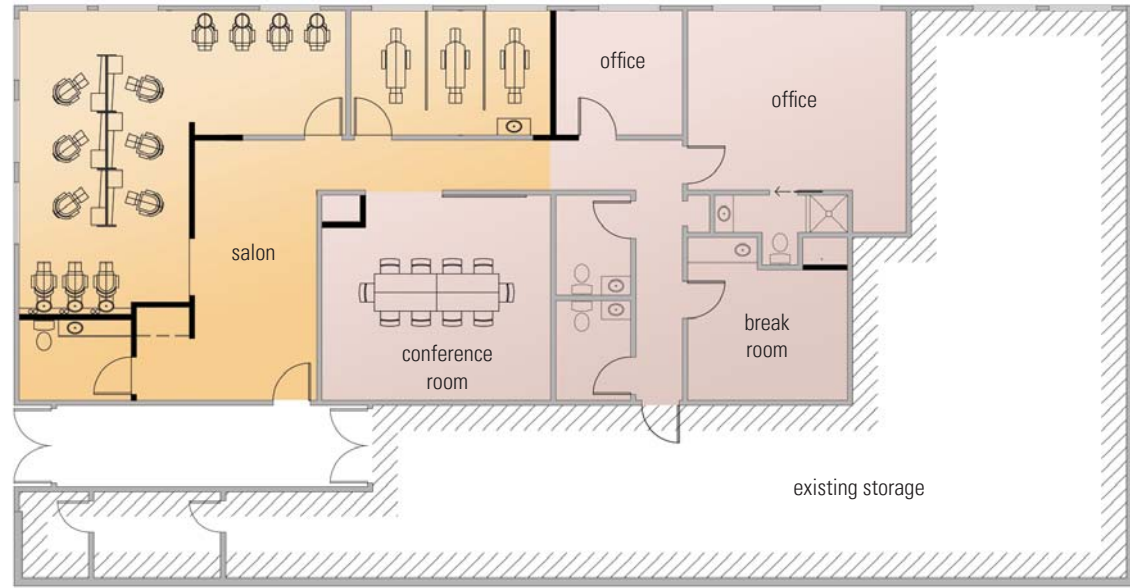
C O S M E T O L O G Y I N S T I T U T E
Seattle, WA

This adaptive reuse project takes an abandoned retail store along Rainier Avenue in South Seattle, and radically repurposes it as a cosmetology school. The renovation entails completely refitting the interior and re-imagining the facade.

The lower floor features a large training salon behind an expansive storefront glazing system. The back wall of the salon was conceived as a backdrop for the public functions of the school. Behind the salon are multiple classrooms, each designed for specific types of beauty instruction. The limited amount of space available for classrooms provided an opportunity for room functions to change throughout the day as the school requires different types of classes. The upper floor of the building houses a separate, independently operated beauty salon, conference room and offices.

schemata workshop
1720 12th avenue #3
seattle, wa 98122
206.285.1589

www.schemataworkshop.com
© 2008 schemata workshop



completed building



learning salon