



l a k e c i t y c o u r t a p a r t m e n t s
Seattle, WA

Lake City Court Apartments is a 76 unit, six story, mixed-use building located in an urban village just north of downtown Seattle. The building is comprised of ground level commercial/retail space, a second level of residential amenities, services and outdoor terrace, with four levels of studio apartments above.

Construction will begin in Spring 2008, occupancy to follow in Spring 2009.

design architect Schemata Workshop
architect of record Runberg Architecture Group

developer Low Income Housing Institute
general contractor Walsh Construction Company

schemata workshop
1720 12th avenue #3
seattle, wa 98122
206.285.1589

www.schemataworkshop.com
© 2008 schemata workshop

l a k e c i t y c o u r t a p a r t m e n t s



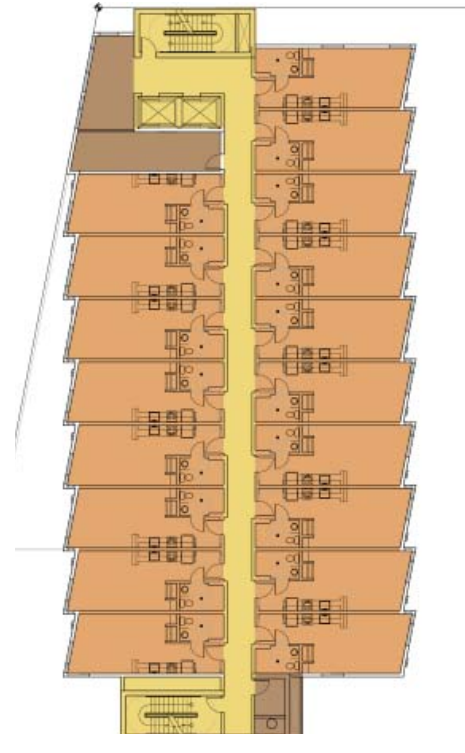
precedents for street level character and scale



aerial view of site



ground level



typical residential floor

residential lobby perspective

