



O C E A N   R E T R E A T

New Residence  
Westport, WA

Our clients grew up in the Grays Harbor area, but had long since moved north to Seattle. The “cabin”, as it has become to be known, was not intended to be a second home, but truly a retreat down near the ocean. The clients requested something between a lighthouse and a lean-to on the beach that would feel comfortable for two, yet accommodate groups up to twelve.

While the house is located within a quarter mile of the ocean, the surrounding context is typically suburban with ramblers and manufactured homes. Inspiration for this house and landscape came from the surrounding coastal architecture and beaches - the metal pole buildings that line the marina and the beach grass that carpets the nearby sand dunes...this house acknowledges all of these environmental factors.

schemata workshop  
1720 12th avenue #3  
seattle, wa 98122  
206.285.1589

[www.schemataworkshop.com](http://www.schemataworkshop.com)  
© 2008 schemata workshop



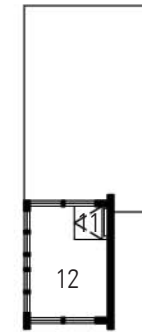
The clients desired a retreat that was easy to maintain, constructed of durable materials that could withstand the severe wind and rain. Light and views were also of high importance.

The main level is comprised of a great room with two large timbered trusses and a gas stove surrounded by slate hearth. The highly efficient kitchen lines the opposing wall and a spacious bathroom off the entry vestibule doubles as a changing room.

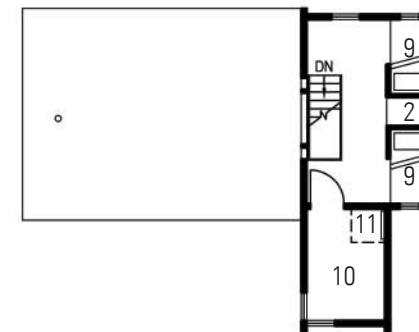
Above, the sleeping level has four bunk beds and a single enclosed room. The lookout, at the uppermost level, is accessible by an attic hatch near the bunks. This crow's nest provides a view of the ocean beyond and the lighthouse immediately to the north.

legend

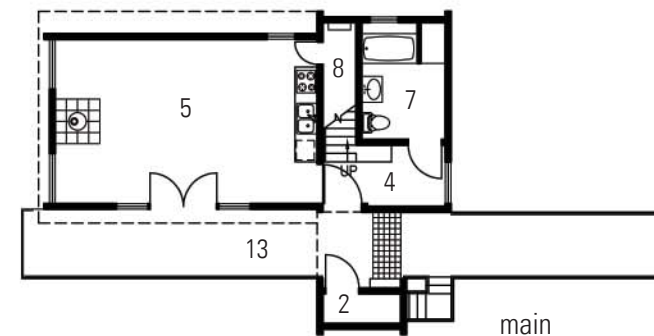
- 1 carport
- 2 storage
- 3 trash/recycle
- 4 entry vestibule
- 5 great room
- 6 kitchenette
- 7 bathroom
- 8 pantry
- 9 bunkbed
- 10 bedroom
- 11 access ladder
- 12 attic lookout
- 13 deck



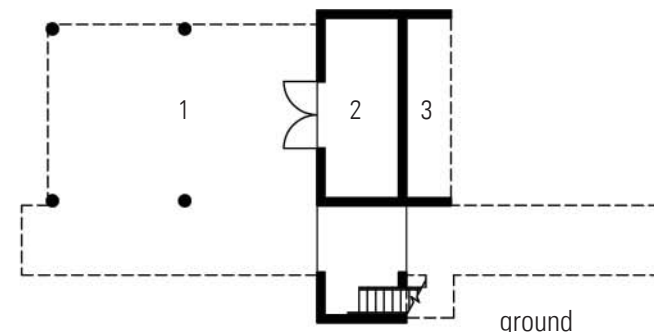
lookout



sleeping loft



main



ground

