



G R E E N L I N E L O F T S
New Multi-Family Housing
Seattle, WA

In the park-like setting adjacent to the Chief Sealth Trail and a short walk to light rail, this modern twenty-one-unit townhome community is clustered around an intimate commons. Two-story high interiors connect with nature and are open to seasonal colors in the garden.

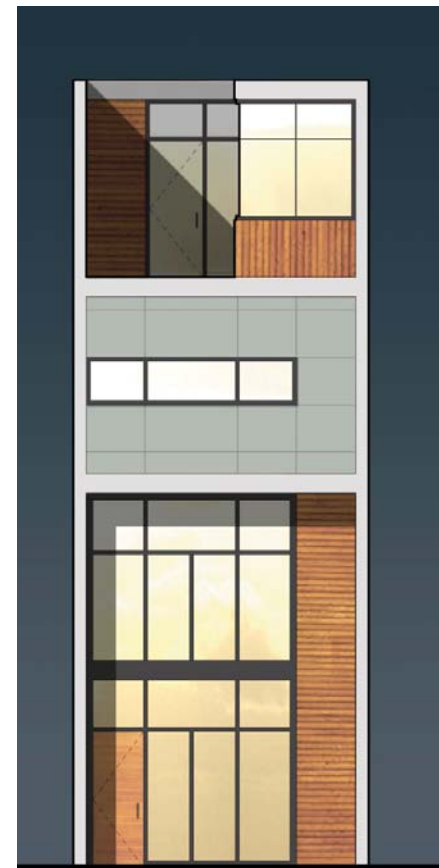
Ascending to upper floors provides privacy and views over the garden, while flexible, open floor plans are easily adaptable to residents and exterior finish materials and colors are thoughtfully integrated to enhance this community.

schemata workshop
1720 12th avenue #3
seattle, wa 98122
206.285.1589

www.schemataworkshop.com
© 2008 schemata workshop



View along Valdez Avenue



Front view



Courtyard view