



S M I T H R E S I D E N C E

Addition and Remodel

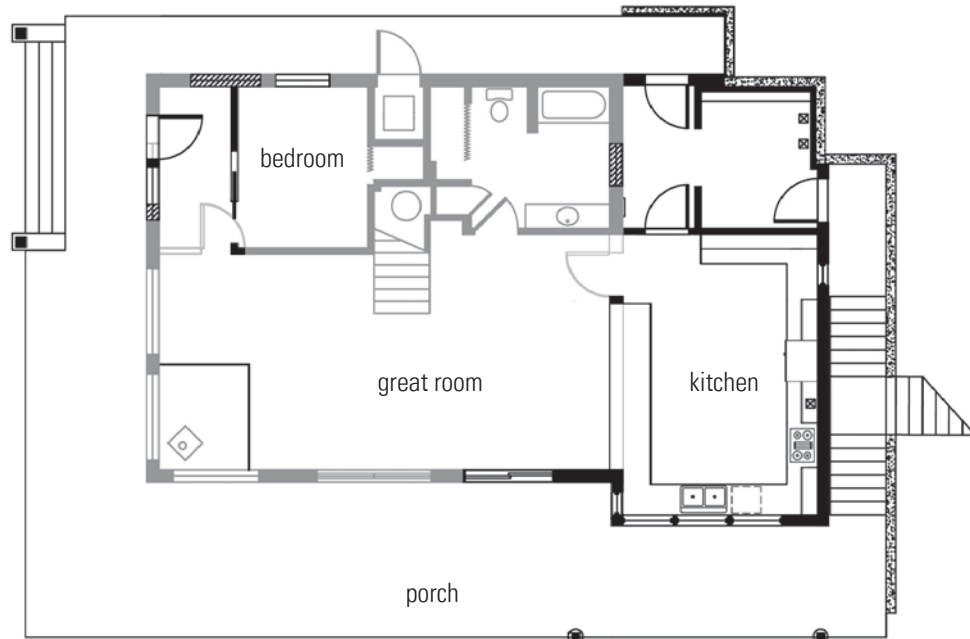
Ferndale, WA

This renovation project accommodates the needs for a growing young family. When the couple moved in several years ago, the voluminous open interiors were just what they wanted to appreciate the impressive views of the Puget Sound. However, the arrival of their first child and preparations for a second caused them to realize the inefficiency of space. This remodel and 1200 sf addition includes a new front entry, closets and a mud room along with three new bedrooms to create a more functional and comfortable home. It improves the flow of the house by properly zoning it from public to private; locating the entry, kitchen, living, dining, and guest room on the main level. A family room and master suite occupy the second level. And the upper floor will accommodate two children's rooms with an open office.

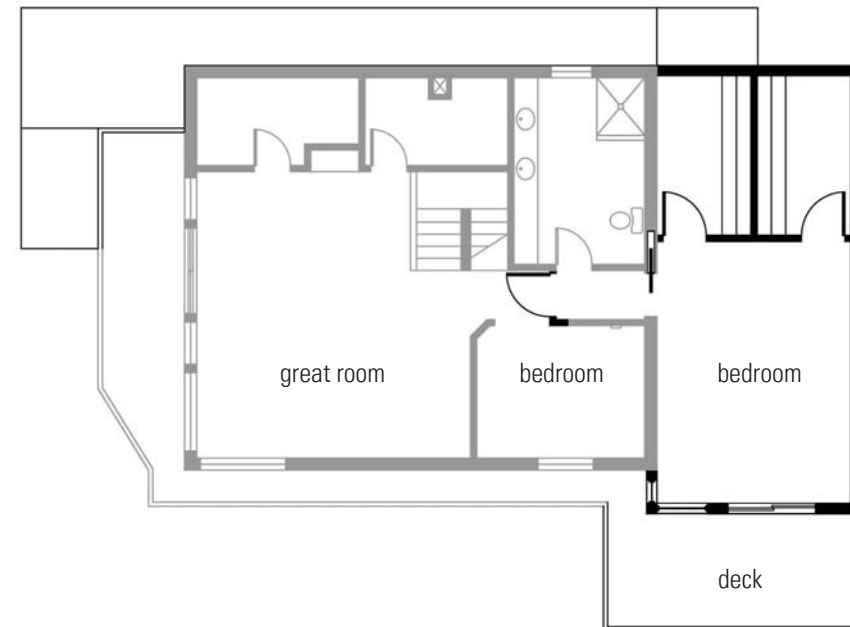
schemata workshop  
1720 12th avenue #3  
seattle, wa 98122  
206.285.1589

[www.schemataworkshop.com](http://www.schemataworkshop.com)  
© 2008 schemata workshop

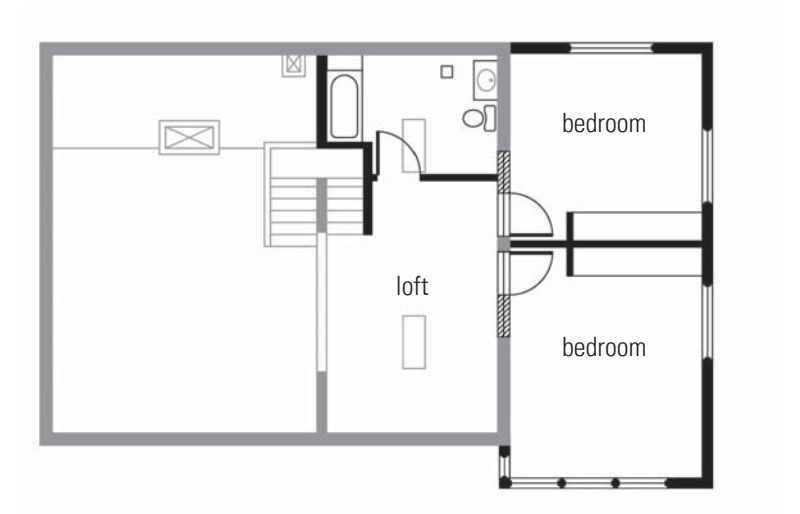
S M I T H R E S I D E N C E



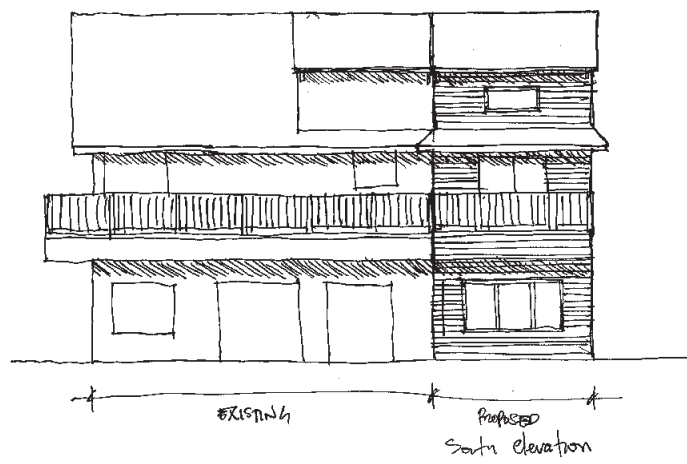
first floor



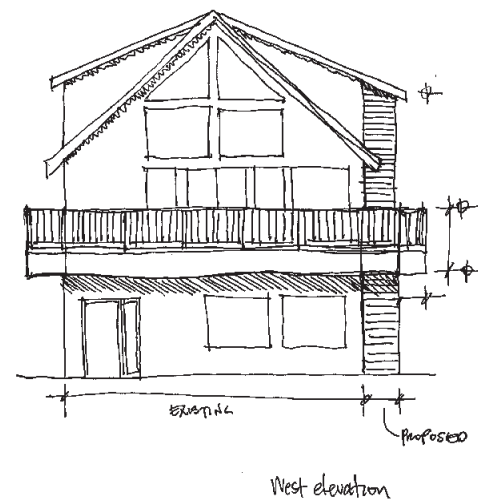
second floor



third floor



South elevation



West elevation

